



www.hollyland-tech.com



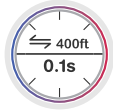
Awaken

MARS 400S PRO
The Power





BRAND-NEW
DESIGN



0.1S
LOW LATENCY



MULTIPUL FAN
MODES



DIRECT VIDEO
FOR LIVE STREAM



OPTIMIZED
MONITORING FEED



MULTIPLE
POWER OPTIONS

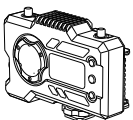


CHANNEL SCAN
FIRMWARE UPDATE ON APP

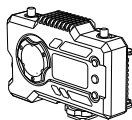
Parameter

| | Transmitter | Receiver |
|-----------------------------|---|--|
| Interfaces | HDMI Input(Type A Female) SDI Input 2* Antenna Interfaces (RP-SMA Male) DC Input USB Type-C | HDMI Output(Type A Female) SSDI Output 2* Antenna Interfaces (RP-SMA Male) DC Input USB Type-C |
| Supply Interfaces | DC Power Input:6-16V USB Type-C Power Supply:5V/2A Battery Power Supply:6-16V DC | DC Power Input:6-16V USB Type-C Power Supply:5V/2A Battery Power Supply:6-16V DC |
| Power Consumption | <11W | <7W |
| Weight | 206g | 206g |
| Dimension | (L*W*H): 110*72*33.5mm (The Battery Plate Exclude) | (L*W*H): 110*72*33.5mm (The Battery Plate Exclude) |
| Input / Output Video Format | HDMI:480p60 576p50 720p50/59.94/60 1080i50/59.94/60 1080p23.98/24/25/29.97/30 1080p50/59.94/60 SDI:1080p60/59.94/50(Level A) 1080p60/59.94/50(Level B) 1080i60/59.94/50 1080p30/29.97/25/24/23.98 1080P sF 25 720p60/59.94/50 1080P sF 24/23.98 | HDMI:480p60 576p50 720p50/60 1080i50/60 1080p24/25/30 1080p50/60 SDI:1080p60/50(Level A) 1080p60/50 1080p30/25/24 720p60/50 1080i50(1080P sF 25/24/23.98input) 1080i60(1080P sF 30/29.97input) |
| Frequency | 5GHz | 5GHz |
| Modulation Mode | OFDM | OFDM |
| Transmission Power | Maximum 21dBm | / |
| Receiver Sensitive | / | 80dBm |
| Transmission Latency | 0.1s | 0.1s |
| Bandwidth | 20MHz | 20MHz |

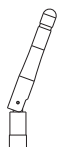
PACKING LIST



Transmitter x1



Receiver x1



Antenna x5



DC Adapter x1



User Guide x1

*Please subject to actual shipment as the standard if any difference in accessories.