

# TAINER ASSEMBLING CL-TN001S M,2 SATA SSD



## TAINER CL-TN001S M.2 SATA SSD

\* Preparation

1. TAINER
2. (+) Screw Driver

[Pic 1]

[Pic 2]



[Pic 1]

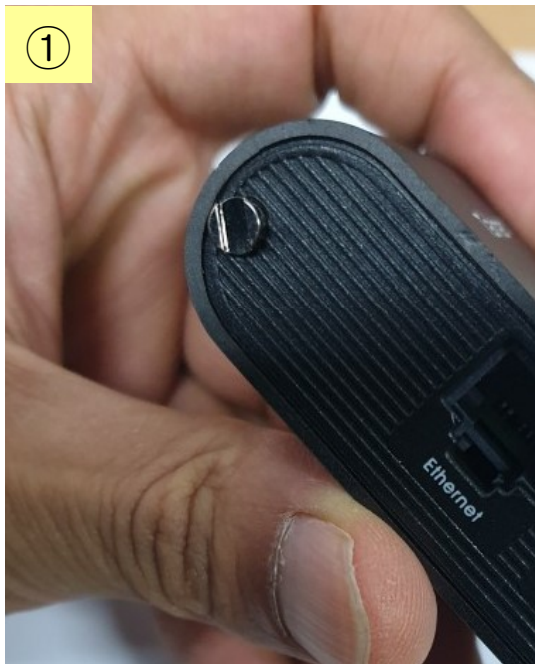


[Pic 2]

1. Remove WiFi Dongle & Silicon case

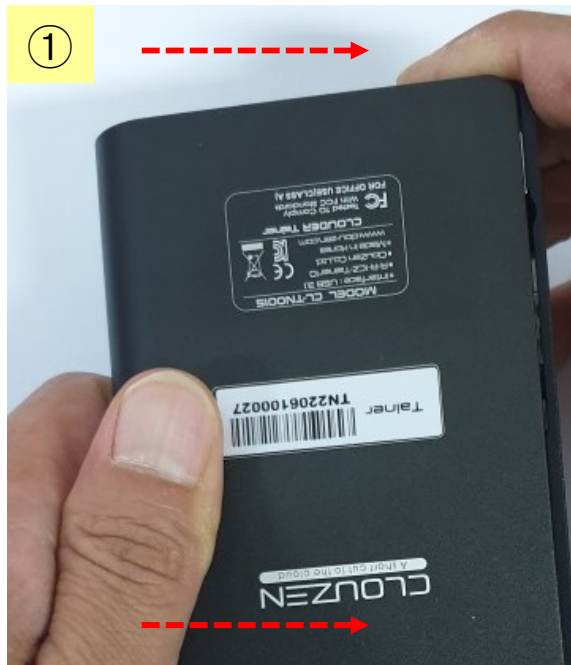


## 2. Remove Coin-Lock Screw



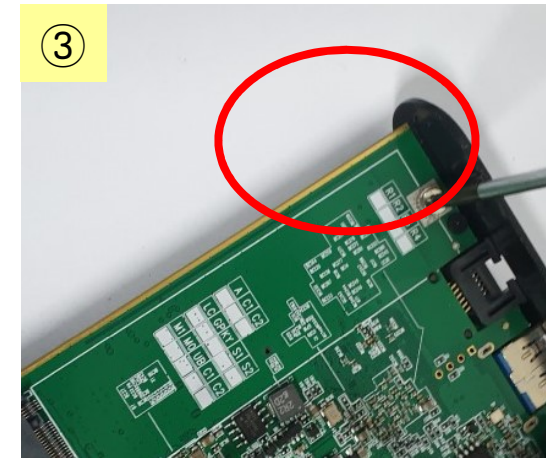
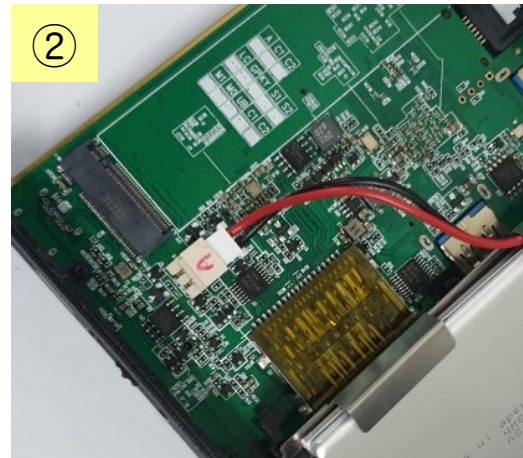
\*\* To remove the coin-lock screws on both sides of the main body, use a coin to loosen and remove them.

### 3. Remove Aluminum Case

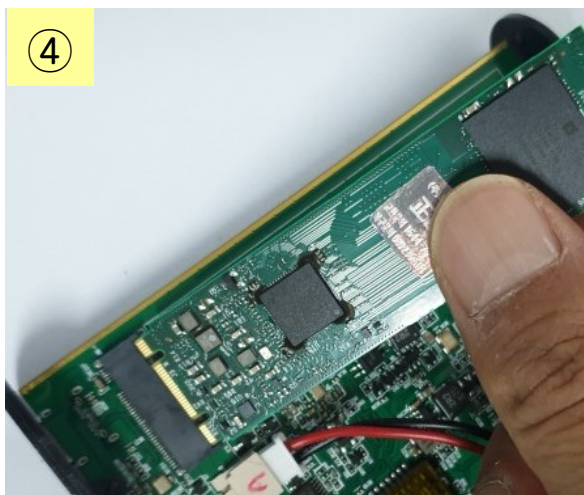


- \* Prior to sliding out the aluminum case, it is important to hold the container with the back side facing up. By doing so, you can prevent the internal battery from accidentally dropping while sliding out the case.
- \*\* To remove the aluminum case, slide it out towards the side indicated by the arrow.

#### 4. Add M.2 SATA SSD

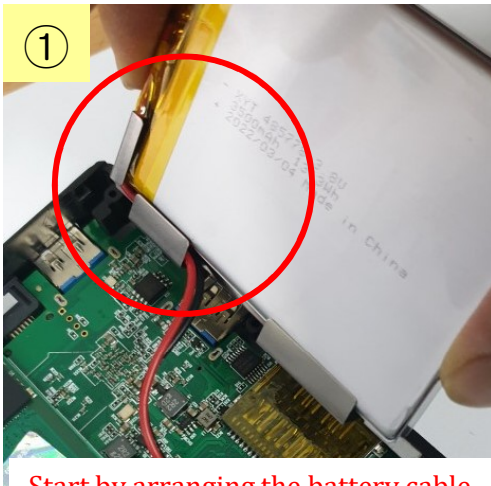


3) Unfasten the M.2 screw

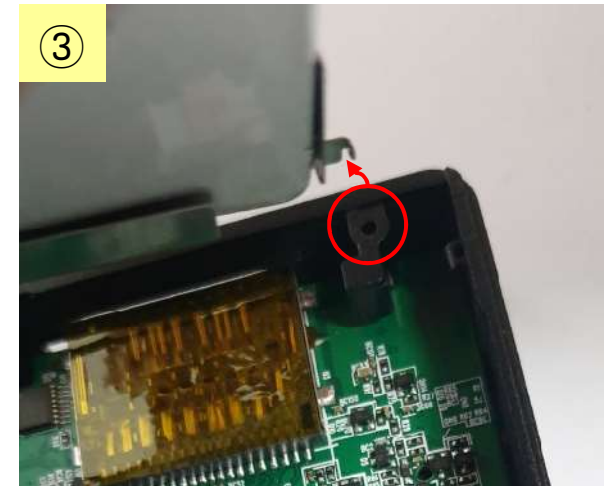
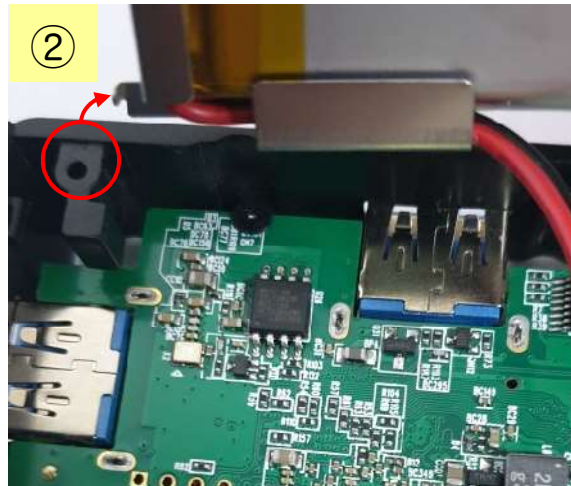


5) Fasten the M.2 screw

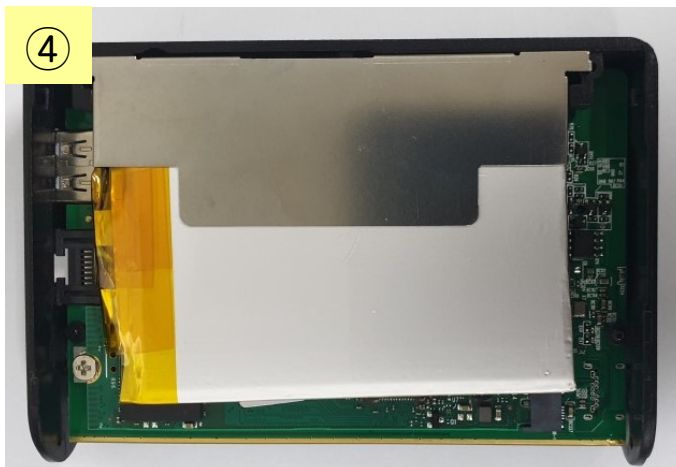
## 5. Assemble Battery



Start by arranging the battery cable as shown in the figure provided



Take note of the tiny hooks on the right and left edges of the metallic battery holder case. Ensure that these hooks are properly aligned with the corresponding holes on the body plastic case.

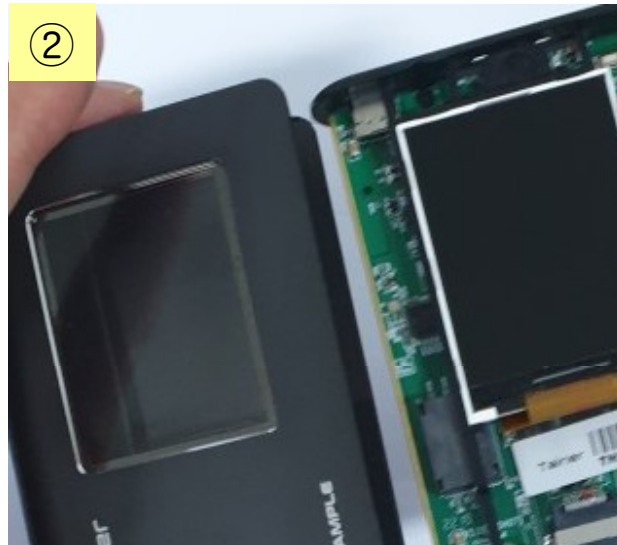


4) Carefully place the battery into the battery holder, ensuring a secure fit.

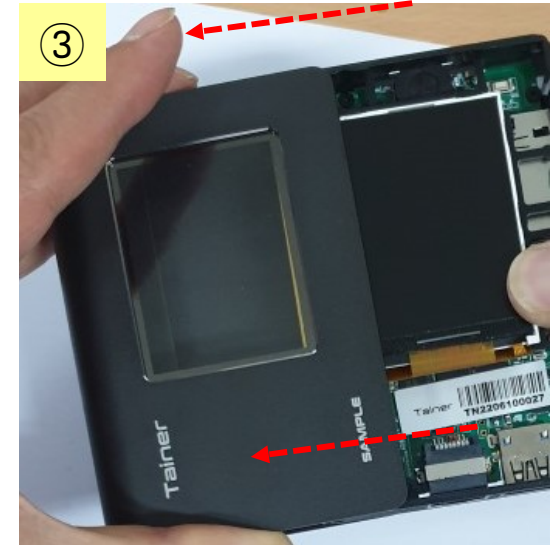
6. Assemble the Aluminum case - 1



1) Hold the case as shown above



2) Front side UP



3) Slide in the Aluminum case



6. Assemble the Aluminum case - 2



Fasten the coin-lock screw

**Do NOT fasten too tightly. Over-tightening may cause the screw to malfunction.**

## 7. Assemble Silicon case and WiFi Dongle



**The WiFi dongle MUST always be inserted into the USB Host port on the left side (USB2.0 Cloud Port)**

# THANK YOU

