



***iTANK***  
***i310 Series***  
*User Manual*

<b>» i310 User Manual.....</b>	<b>1</b>
1. Environmental Requirements.....	1
2. Product Appearance and Packaging Content.....	1
3. Hardware Requirements and Precautions .....	2
4. Hardware Installation.....	3
5. Description of HDD Indicators .....	3
6. Install The Operation System Into This Device .....	4
<b>» i310 產品使用說明 .....</b>	<b>9</b>
1. 環境需求.....	9
2. 產品外觀及包裝內容.....	9
3. 硬體需求與注意事項.....	10
4. 硬體安裝.....	11
5. 燈號說明.....	11
6. 外接磁碟安裝作業系統.....	12

## About this Manual

Thank you for choosing the STARDOM product. This manual will familiarize you with the STARDOM i310 product. We recommend reading through this manual before using the STARDOM i310 product. The information provided in this manual was checked before publication, but the actual product specifications may have changed before shipping; Latest product specifications and updates can be found at [www.STARDOM.com.tw](http://www.STARDOM.com.tw). No separate notifications will be provided by our company. If you would like to receive the latest STARDOM product information, manuals, and firmware, or have any questions regarding STARDOM products, please contact your local supplier or visit [www.STARDOM.com.tw](http://www.STARDOM.com.tw) for more information.

All product-related content in this manual are copyrighted by RAIDON TECHNOLOGY, INC.

## 1. Environmental Requirements

Operating temperature: 0 ~ 40 °C (32 ~ 104 °F)

Storage temperature : -20 ~ 47°C (-4 ~ 116 °F)

Operating voltage: 100 ~ 240V AC

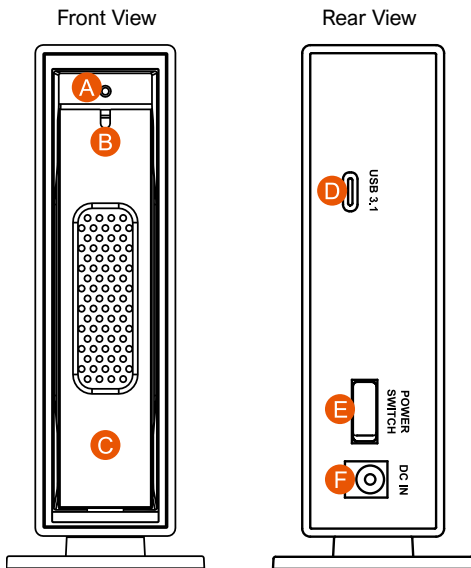
## 2. Product Appearance and Packaging Content

The following items should be inside the package upon opening:

i310-BA31 product x1 (with removable drive tray enclosed x1)	i310-B31 product x1 (with removable drive tray enclosed x1)	i310-B31A product x1 (with removable drive tray enclosed x1)
USB 3.2 C to C cable x1	USB 3.2 C to C cable x1	— —
USB 3.2 C to A cable x1	— —	USB 3.2 C to A cable x1
Power cable x1	Power cable x1	Power cable x1
AC/DC Adapter x1	AC/DC Adapter x1	AC/DC Adapter x1
Quick setup guide x1	Quick setup guide x1	Quick setup guide x1
Screws and Ejector pin	Screws and Ejector pin	Screws and Ejector pin

- Please check the product and accessories for any defect or missing parts. If you have any questions, please contact your product supplier.
- Please visit the official website - Download page (<http://www.stardom.com.tw/STARDOM2016/download.php>) to download other related resources.

## Front and rear view



- |                           |                                 |
|---------------------------|---------------------------------|
| A. HDD access light       | D. USB 3.2 Gen2 Type-C (10Gbps) |
| B. HDD tray ejection hole | E. Power switch                 |
| C. HDD tray handle        | F. Power socket                 |

**NOTE:**

Please make sure that the product is connected to the host (power on status) before turning on the power, otherwise the product will be on the sleep mode.

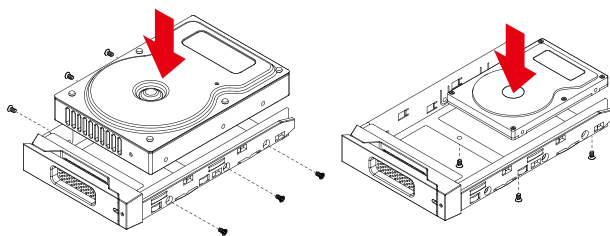
## 3. Hardware Requirements and Precautions

1. After the hard disk is formatted, the actual total capacity of the i310 detected by the computer operating system will vary from the sum of all hard disk capacities stated by the manufacturer.
2. To prevent data loss, do not remove i310 while the system is running.
3. Please always connect the USB cable to the computer to ensure the energy saving function operating normally.
4. If the i310 needs to be shut down or disconnected, please ensure the HDD is safely removed through your operating system before turning off the power.
5. We strongly recommend backing up important data stored on the i310 to another storage device or a remote site. STARDOM will not be held liable for the damage or loss of data you stored on the i310.

## 4. Hardware Installation

Please follow the instructions below to complete the hardware installation.

1. Open the package and take out the product making sure that all the enclosed contents are not damaged or missing. Should you find damages or missing contents, please contact your supplier immediately.
2. Place the enclosure on a stable surface, ensure that it is well ventilated without blockage to the vent and kept away from locations near water or where the product may become vulnerable resulting in damages.
3. Use the ejector pin included in the accessory kit and inserted into the pin release opening to eject the removable drive tray latch and extract the removable drive tray.
4. For 3.5" HDD/SSD, please secure it by use six the larger screws included in the accessory kit. For 2.5" HDD/SSD, please secure it by use four the smaller screws included in the accessory kit.



5. Choose one of the provided cables of your preference to connect the preferred interface connection on the enclosure unit to the computer.
  6. Depending on the type of computer USB port, select the corresponding USB cable in the accessory to connect the computer to the USB port on the i310.
  7. Connect the power cord to the power adapter, connect the connectors at both ends to the i310 and the power socket, and then start the i310.
  8. After the computer is turned on, the storage capacity will be automatically recognized by the operating system. After the storage capacity is recognized successfully, please format the system according to your desired storage format and follow the instructions of the operating system. After the hard disk is formatted, the i310 can be used directly.
- ※ If you are using a USB 3.2 C to A cable, the Type-A on the host side needs to be USB 3.2 Gen2 for best access performance.

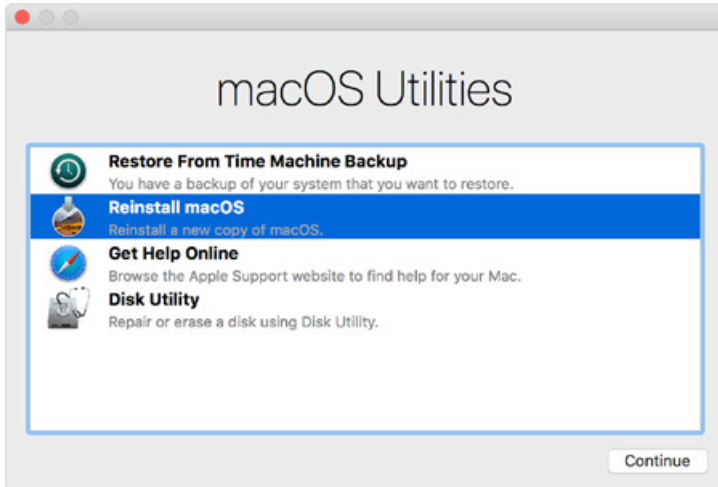
## 5. Description of HDD Indicators

Status	HDD Status Light
Data access	Blue light flashing
HDD idle	Blue light always on
Sleep mode	Blue light off

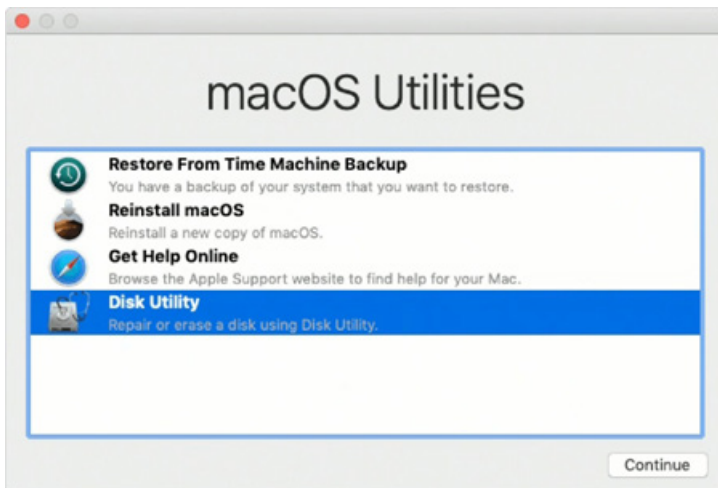
## 6. Install The Operation System Into This Device

### Install macOS (Use macOS Mojave 10.14 for example)

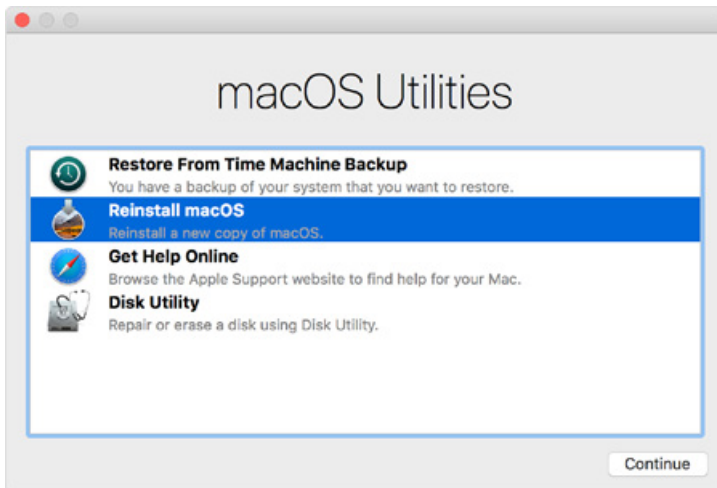
1. Need to have network online capabilities. If a wireless network is available, you can choose it from the Wi-Fi menu in the menu bar. This menu is also available in macOS Recovery.
2. Turn on your Mac and immediately press and hold Command (⌘)-R. Continue holding until you see the Apple logo or a spinning globe. Startup is complete when you see the utilities window:



3. If you need to erase your disk before installing macOS, select Disk Utility from the Utilities window, then click Continue. You probably don't need to erase, unless you're selling or giving away your Mac or have an issue that requires you to erase.



4. Install macOS. Choose Reinstall macOS from the Utilities window, and click continue.



5. Follow the onscreen instructions, select agree to the software license agreement, and then select the disk to start the installation.



6. Please allow installation to complete without putting your Mac to sleep or closing its lid. During installation, your Mac might restart and show a progress bar several times, and the screen might be empty for minutes at a time.

## Install Windows (Use Windows 10 Home Edition for example)

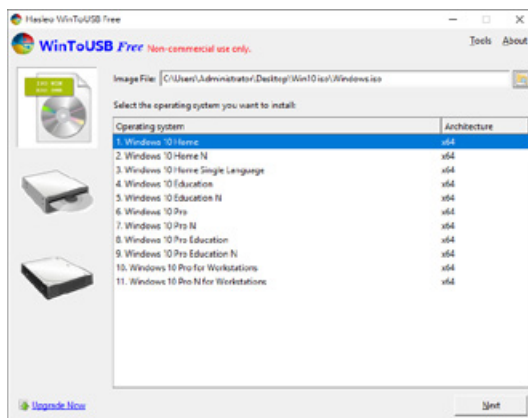
1. The following content is an example of using the software "WinToUSB Free Edition". For related specifications and copyrights, please refer to [the software official website](#) for details.
2. After the software is installed, press the shortcut icon of the desktop twice to open Hasleo WinToUSB.



3. On the left side of the interface, select "Mirror to USB" and click the right folder icon to select the ISO file for Windows 10.



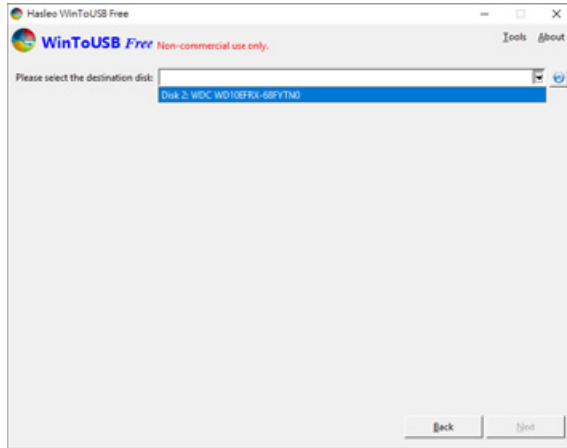
4. Select the version of Windows you want to install and go to the next step.



Note: WinToUSB Free Edition does not support Windows Professional and Enterprise editions.



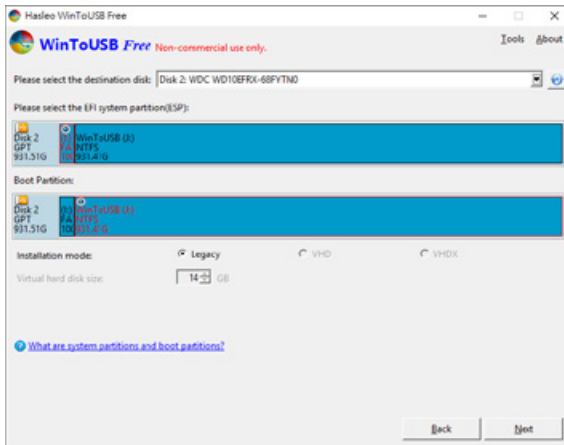
5. Select the USB external drive to install.



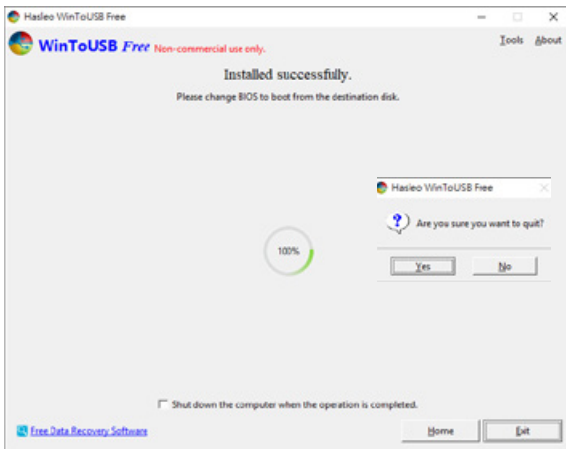
6. Select the version of the disk partition configuration according to your personal hardware specifications, then execute "Yes" to proceed to the next step.



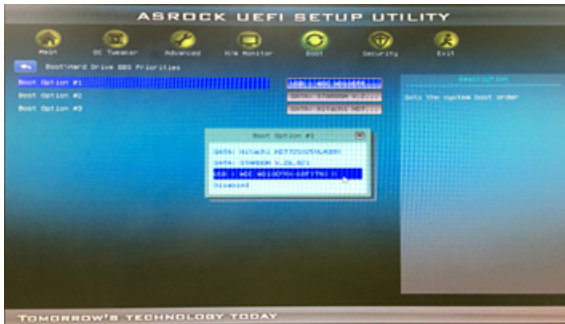
7. Follow the default and follow the next step.



- 8. Windows 10 is installed to an external hard drive. After the installation is complete, click the "End" button, and then confirm to leave.



- 9. Confirm that the external hard disk is inserted in the USB slot of the computer. After rebooting, enter the BIOS or UEFI adjusts to the USB external hard disk box as the first boot sequence, and saves the settings and leaves.



Note: The screenshot is for illustration only, and the actual situation varies depending on each motherboard.

- 10. Then start the installation process for Windows 10, and follow the system instructions and personal requirements to complete the setup.

## 關於這份手冊

感謝您使用 STARDOM 的產品。本手冊將介紹 STARDOM i310 產品。在您開始使用 STARDOM i310 產品前，建議您先閱讀過本手冊。手冊裡的資訊在出版前雖已被詳細確認，實際產品規格仍將以出貨時為準；任何產品規格或相關資訊更新請您直接到 [www.stardom.com.tw](http://www.stardom.com.tw) 網站查詢，本公司將不另行通知。若您想獲得 STARDOM 最新產品訊息、使用手冊、韌體，或對 STARDOM 產品有任何疑問，請您聯絡當地供應商或到 [www.stardom.com.tw](http://www.stardom.com.tw) 取得相關訊息。

本手冊相關產品內容歸銳銜科技股份有限公司版權所有

## 1. 環境需求

工作溫度：0 ~ 40 °C (32 ~ 104 °F)

儲存溫度：-20 ~ 47°C (-4 ~ 116 °F)

工作電壓：100 ~ 240V AC

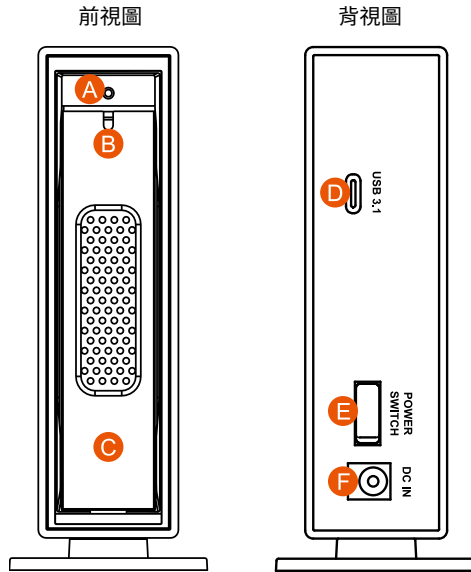
## 2. 產品外觀及包裝內容

打開包裝外盒後，包裝內容應包含下列組件：

i310-BA31 產品 x1 (內含抽取盒 x1)	i310-B31 產品 x1 (內含抽取盒 x1)	i310-B31A 產品 x1 (內含抽取盒 x1)
USB 3.2 C to C 連接線 x1	USB 3.2 C to C 連接線 x1	— —
USB3.1 C to A 連接線 x1	— —	USB3.1 C to A 連接線 x1
電源線 x1	電源線 x1	電源線 x1
電源轉換器 x1	電源轉換器 x1	電源轉換器 x1
快速安裝導引 x1	快速安裝導引 x1	快速安裝導引 x1
螺絲及頂針	螺絲及頂針	螺絲及頂針

- 請先確認相關配件與產品本身是否有受損或是缺少配件，若有任何疑問，請與您的經銷商或業務人員聯絡。
- 請前往官網 - 產品資料下載頁面 (<http://www.stardom.com.tw/STARDOM2016/download.php>) 下載其餘相關資源。

## 正面與背面示意圖



- |             |                                 |
|-------------|---------------------------------|
| A. 硬碟讀取燈    | D. USB 3.2 Gen2 Type-C (10Gbps) |
| B. 硬碟抽取盒頂針孔 | E. 電源開關                         |
| C. 硬碟抽取盒把手  | F. 電源插座                         |

注意：開啟產品電源前，請確認產品與主機端（開機狀態）已連接，否則產品將進入休眠狀態。

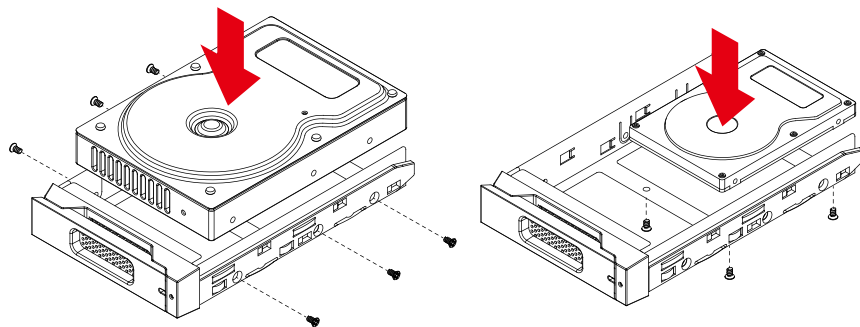
### 3. 硬體需求與注意事項

1. 硬碟格式化後，由電腦主機作業系統所辨識 i310 的實際總容量會與硬碟廠所標示的容量加總後，將有所差異。
2. 當系統運作時，請勿任意移除 i310，以免導致資料遺失。
3. 為了確保節能功能的正常運作，請將 USB 連接線常態性與電腦端保持連接。
4. 當您需要關閉或移除 i310 時，務必透過您所操作的作業系統中執行硬碟安全移除後，方進行電源關閉的動作。
5. 強烈建議除了使用 i310 的資料儲存功能外，請針對重要資料備份到另一個儲存裝置上或遠端備份，雙重備份您重要的資料。若您儲存在 i310 的資料損毀或遺失，STARDOM 將不負任何的責任。

## 4. 硬體安裝

請參照下列步驟，完成 i310 的硬體安裝：

1. 當你打開包裝後，首先請先檢查產品主體以及附件是不是有毀損或是短缺情形，如果發現產品主體及附件短缺，請立刻與您的供應商聯絡。
2. 將主機置放於平穩空間上，並確保其通風良好，不會堵塞通風口。(請避免接近水源或是其他容易造成產品損傷的環境)
3. 請使用零件包中所附的頂針插入硬碟抽取盒頂針孔，開啟硬碟抽取盒把手便將抽取盒取出。
4. 安裝 3.5 吋硬碟，請使用 6 顆零件包內附的大顆螺絲加以固定；安裝 2.5 吋硬碟，請使用 4 顆零件包內附的小顆螺絲加以固定。



5. 硬碟安裝完成後，請將抽取盒平移放入主機內，並關上把手。
  6. 視電腦 USB 埠類型選擇配件中的對應的 USB 連接線，連接電腦與 i310 的 USB 埠。
  7. 將電源線與電源轉接器連接好，並將兩端接頭各自接到 i310 及電源插座後啟動 i310。
  8. 此時，您的作業系統將會自動辨識到儲存容量；待辨識成功後，請依據您所需的儲存格式，將系統依照作業系統的指示完成格式化。待硬盤格式化完成後，便可直接使用 i310。
- ※ 若您使用的是 USB 3.2 C 到 A 連接線，主機端的 Type-A 需為 USB 3.2 Gen2 規格方可達到最佳存取效能。

## 5. 燈號說明

狀態	硬碟狀態燈
資料存取	藍燈閃爍
硬碟閒置	藍燈恆亮
電腦休眠	藍燈熄滅

## 6. 外接磁碟安裝作業系統

### 安裝 macOS (以 10.14 Mojave 為例)

1. 需具備網路連線能力。若有無線網路可用，可以從選單列的 Wi-Fi 選單中選擇該網路。「macOS 復原」也提供這份選單使用。
2. 開啟 Mac 並立即按住 **Command(⌘)-R**，持續按住這些按鍵，直到出現 Apple 標誌或旋轉的地球。看到工具程式視窗，即表示完成啟動：



3. 若必須在安裝 macOS 之前清除磁碟，請從「工具程式」視窗選擇「磁碟工具程式」，然後按一下「繼續」。您可能不需要清除磁碟，除非要將 Mac 賣或送給別人，或是有問題需要清除磁碟。



4. 安裝 macOS，在「工具程式」視窗中，選擇「重新安裝 macOS」，按一下「繼續」。



5. 按照螢幕上的指示，選擇同意軟體許可協議，然後選擇磁碟，開始安裝。



6. 請不要讓 Mac 進入睡眠或關上上蓋，以利安裝程序順利完成。安裝期間，Mac 可能會重新啟動並顯示進度列好幾次，而螢幕畫面也可能會一次空白幾分鐘時間。

## 安裝 Windows (以 Windows 10 家庭版為例)

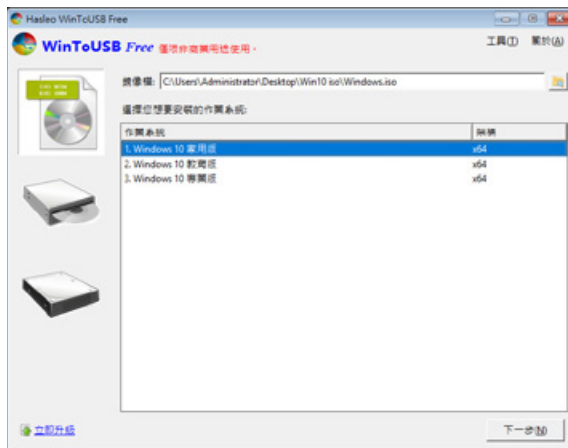
1. 以下內容為使用工具軟體「WinToUSB 免費版」作為範例，相關規範與版權請到[軟體官網](#)詳閱說明。
2. 軟體安裝後，連續按兩下桌面的捷徑圖示，開啟 Hasleo WinToUSB。



3. 在界面左方選擇「鏡像到 USB」，再點選右方資料夾圖示來選擇 Windows 10 的 ISO 檔。



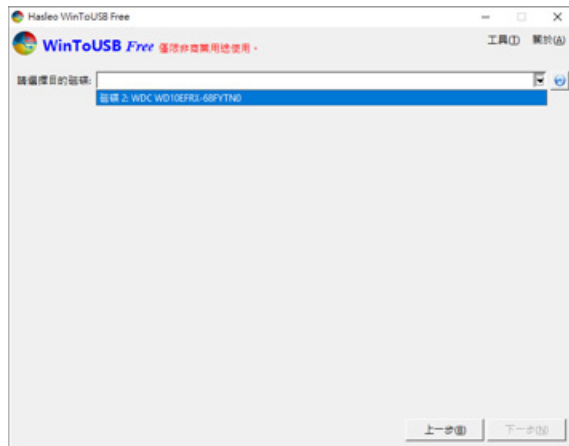
4. 選擇要安裝的 Windows 版本，執行下一步。



註：WinToUSB 免費版不支援 Windows 專業版與企業版。



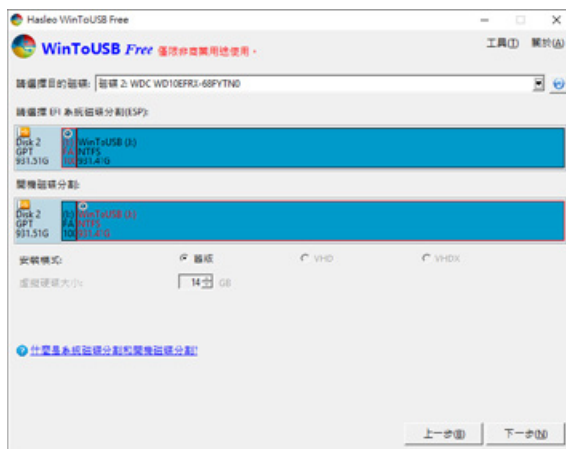
5. 選擇要安裝的 USB 外接硬碟。



6. 依照個人硬體規格選擇磁碟分割配置的版本，之後執行「是」進行下一個的步驟。



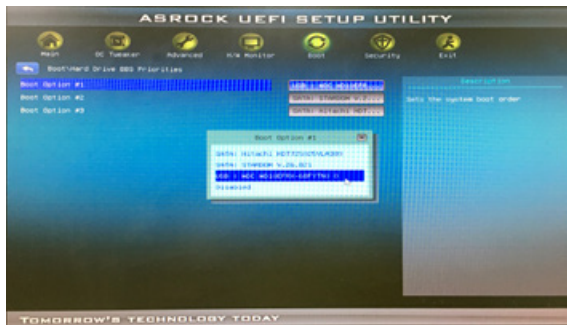
7. 依照預設值，執行下一步。



8. Windows 10 安裝到外接硬碟，待安裝完成後點選「結束」按鈕，之後再確認離開。



9. 確認外接硬碟插在電腦的 USB 插槽，重新開機後，進入 BIOS 或是 UEFI 調整成 USB 外接硬碟盒為第一開機順序，儲存設定後離開。



註：截圖僅為示意，實際情況依各家主機板而有所不同。

10. 接著開始進入 Windows 10 的安裝過程，請依系統指示以及個人需求完成設定。



<http://www.stardom.com.tw/>

