



SOHORAID SR2 Series

2 Bay External Hardware RAID Storage for Two 3.5"/2.5" SATA Disk
USB Type-C interface, compatible with USB Type-C and Type-A host interfaces.

SOHORAID SR2 Series (SR2) is a high performance, low cost RAID storage that supports high definition video and audio post production work flows. With easy-to-use touch button on the front panel, you can easily use it to store audio and video data and edit these data directly from USB Type-C enabled laptops, such like Macbook Pro.

Features

1. External Hardware RAID storage for macOS and Windows
2. With USB Type-C interface, it's reversible
3. Supports USB Type-C or USB Type-A host interface
4. User friendly Touch Button design
5. LCD monitor for device status display
6. Plug and play, no driver needed
7. Hot swappable disk tray, supports 2 x 3.5"/2.5" SATA disk
8. High efficiency cooling fan
9. Aluminum chassis

User Friendly Touch Button & Display

SR2 comes with user friendly Touch Button design, user can setup SR2 with these buttons easily. SR2 equipped with clear readable LCD display and LED indicators for device monitoring during operation, users can easily grasp the status of the storage all the times. Moreover, it comes with audio alarms whenever failure occurs.



Compatible with USB Type-C and Type-A Hosts

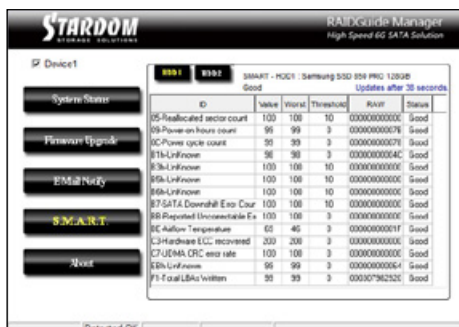
SR2 comes with one USB Type-C interface, but not every PC/Mac comes with USB Type-C interface too. Therefore, based on the model, STARDOM provides two kinds of USB cables, one is USB Type-C to Type-C cable and the other is USB Type-C to Type-A cable, or both. User can choose which SR2 to buy based on what host interface he/she has, no need to buy a adapter or other cable.

- SR2-B31 : with 1 x USB Type-C to Type-C cable
- SR2-B31A : with 1 x USB Type-C to Type-A cable
- SR2-BA31 : with 1 x USB Type-C to Type-C cable & 1 x USB Type-C to Type-A cable



Utility with Disk S.M.A.R.T. Information

STARDOM provides the Windows based Utility for monitoring the device, user just need to download it from STARDOM's website. When open the Utility, it will not only shows the status about the SR2, also will shows the S.M.A.R.T. information of the two disks be used in the SR2. With these useful information, user can change the disk before it really damaged to have better protection for the data stored in the SR2.

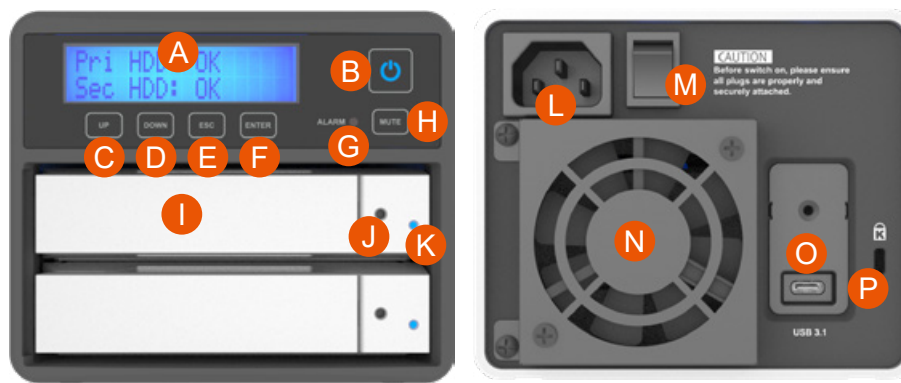


Hot-Swappable Disk Tray, supports 3.5"/2.5" Disk

Comes with easy-to-use disk tray, SR2 supports most 3.5"/2.5" disk (both HDD and SSD) on the market. Under RAID 1 mode, when one disk failed, user just need to hot-swap out the failed disk and replace a new one back even the SR2 is power on. It's easier for user to maintain the SR2.

- ★ Spare disk tray is available





- | | | |
|-----------------------|------------------------------|------------------------|
| A. LCM display | G. Alarm indicator | L. Power socket |
| B. Power touch switch | H. Mute button | M. Main power switch |
| C. UP button | I. HDD enclosure handle | N. Fan |
| D. DOWN button | J. HDD access light | O. USB 3.1 Type-C port |
| E. ESC button | K. HDD enclosure pin release | P. Anti-theft lock |
| F. ENTER button | | |

Technical Specification

Interface	1 x USB 3.2 Gen2 Type-C (Performance up to 6Gbps)
Compatible Drive	2 x 3.5"/2.5" SATA III (6 Gbps) HDD/SSD
Certification	CE/FCC
Storage Mode	RAID 0 / RAID 1
Operating System Support	Windows 7 or above, OS X 10.10 or above
Electrical and perating Requirements	<ul style="list-style-type: none"> • Line voltage: 100-240V AC • Frequency: 50Hz to 60Hz, single phase • Maximum continuous power: 150W • Operating temperature: 32° to 104° F (0° to 40° C) • Storage temperature: -4° to 116° F (-20° to 47° C) • Relative humidity: 5% to 95% noncondensing
Size	Height : 102 mm Width : 122 mm Depth : 205 mm
Product Code	SR2-B31 EAN : 4713227441056 UPC : 884826505617 SR2-B31-B EAN : 4713227441063 UPC : 884826505624 SR2-B31A EAN : 4713227441070 UPC : 884826505631 SR2-B31A-B EAN : 4713227441087 UPC : 884826505648 SR2-BA31 EAN : 4713227440974 UPC : 884826505532 SR2-BA31-B EAN : 4713227441049 UPC : 884826505600
Carton	8 pcs per carton
Package Accessories	<ul style="list-style-type: none"> • SR2 product x 1 (with removable drive tray enclosed x 1) • USB 3.2 Gen2 Type-C to Type-C Cable x 1 (for SR2-BA31/SR2-B31) • USB 3.2 Gen2 Type-C to Type-A Cable x 1 (for SR2-BA31/SR2-B31A) • AC Power Cable x 1 • Quick Installation Guide x 1 • Screws & Ejector pins