



[www.hollyland-tech.com](http://www.hollyland-tech.com)



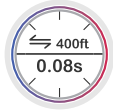
Awaken

MARS 400S PRO  
The Power





BRAND-NEW DESIGN



0.08S LOW LATENCY



MULTIPUL FAN MODES



DIRECT VIDEO FOR LIVE STREAM



OPTIMIZED MONITORING FEED



MULTIPLE POWER OPTIONS

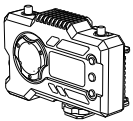


CHANNEL SCAN FIRMWARE UPDATE ON APP

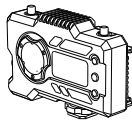
## Parameter

	Transmitter	Receiver
<b>Interfaces</b>	HDMI Input(Type A Female) SDI Input 2* Antenna Interfaces (RP-SMA Male) DC Input USB Type-C	HDMI Output(Type A Female) SSDI Output 2* Antenna Interfaces (RP-SMA Male) DC Input USB Type-C
<b>Supply Interfaces</b>	DC Power Input:6-16V USB Type-C Power Supply:5V/2A Battery Power Supply:6-16V DC	DC Power Input:6-16V USB Type-C Power Supply:5V/2A Battery Power Supply:6-16V DC
<b>Power Consumption</b>	<11W	<7W
<b>Weight</b>	206g	206g
<b>Dimension</b>	(L*W*H): 110*72*33.5mm (The Battery Plate Exclude)	(L*W*H): 110*72*33.5mm (The Battery Plate Exclude)
<b>Input / Output Video Format</b>	HDMI:480p60 576p50 720p50/59.94/60 1080i50/59.94/60 1080p23.98/24/25/29.97/30 1080p50/59.94/60 SDI:1080p60/59.94/50(Level A) 1080p60/59.94/50(Level B) 1080i60/59.94/50 1080p30/29.97/25/24/23.98 1080P sF 25 720p60/59.94/50 1080P sF 24/23.98	HDMI:480p60 576p50 720p50/60 1080i50/60 1080p24/25/30 1080p50/60 SDI:1080p60/50(Level A) 1080p60/50 1080p30/25/24 720p60/50 1080i50(1080P sF 25/24/23.98input) 1080i60(1080P sF 30/29.97input)
<b>Frequency</b>	5GHz	5GHz
<b>Modulation Mode</b>	OFDM	OFDM
<b>Transmission Power</b>	Maximum 21dBm	/
<b>Receiver Sensitive</b>	/	80dBm
<b>Transmission Latency</b>	0.08s	0.08s
<b>Bandwidth</b>	20MHz	20MHz

## PACKING LIST



Transmitter x1



Receiver x1



Antenna x5



DC Adaprer x1



User Guide x1

\*Please subject to actual shipment as the standard if any difference in accessories.