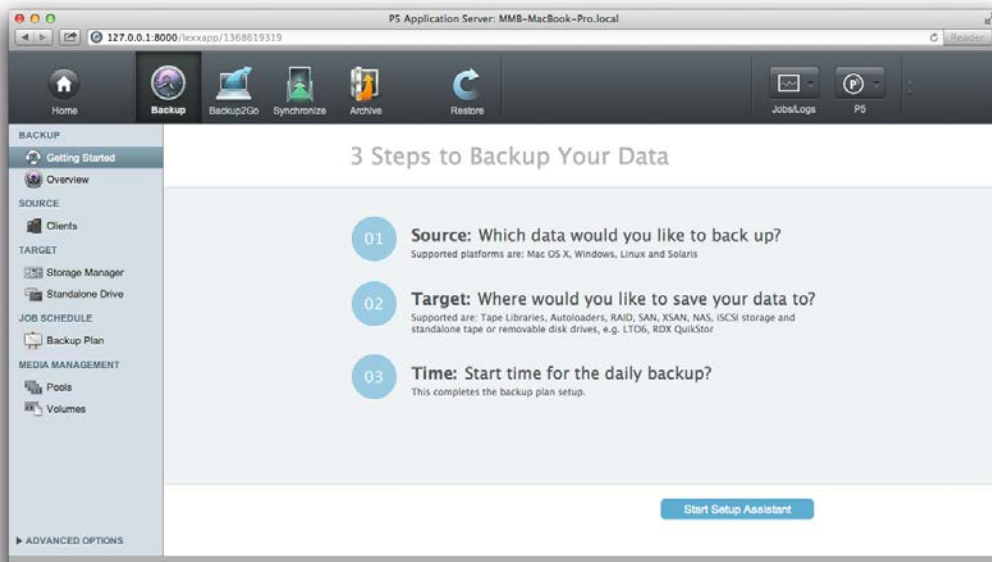




# ARCHIWARE P5 BACKUP



Archware P5 Backup is the automatic, high-performance backup and restore solution for saving data to tape or disk.

### Easy Administration. Anyplace. Anytime.

Archware's browser-based interface enables fast and simple configuration, administration and monitoring – independent of your location. With the new setup assistants the first backup can be setup and run within minutes.

### User Restore

The administrator can give user rights to search, browse and/or restore from backup

### Security and reliability

#### Maximum Security

To ensure maximum data security, a backup clone on a second tape can be created for offsite storage and disaster prevention. Encryption options protect your data during transfer and on the media.

#### Interruptible Backup

Interruptions will be filled in automatically with the next run. All partial backups are restorable.

### Server Backup to Disk and Tape

P5 Backup

#### Nearline and Offline Backup

- ✓ Versions & Snapshots
- ✓ Interruptible Backup
- ✓ User Restore
- ✓ Long Retention & Offsite Storage

■ Maximum security	■ Maximum speed
■ Minimum Administration	■ Full flexibility



# ARCHIWARE P5 BACKUP



## Maximum speed

### Maximum performance through Parallelization

P5 Backup supports multiple drives, tasks and clients simultaneously. Large data sets can be backed up in the shortest time possible.

### Quick restore: Block positioning

Archiware's block-direct positioning allows for fast restore because no sequential seeking takes place on the medium.

## Full flexibility

### Platform independence

Your data can be restored on any platform since Archiware stores it in a platform neutral format.

### Scalable & modular design: Growing with your requirements

There are no limits on possible growth. You can add further Archiware products, hardware, media etc. at any time.

## ARCHIWARE P5

Operating system requirements	Hardware requirements
<b>Mac OS X</b>	<b>Memory</b>
Intel 10.5+	1 GB+
<b>Windows</b>	<b>Hard disk</b>
Server 2008R2/2012, Windows 7/8 as Backup2Go Server: Windows 2008R and Windows 7	200 MB for Installation + variable (for backup/archive indexes)
<b>Linux</b>	<b>Browser requirements</b>
Kernel 2.6.4+ (x86) 32bit or 64bit with 32bit libs For FS-events with inotify, kernel 2.6.13+ required as Backup2Go Server: Btrfs 0.19+	Safari 5.1+, FireFox 3.5+, Chrome 4+, Internet Explorer 9+
<b>Solaris</b>	
Sparc Solaris 2.8+, x86 Solaris 2.10+ Note: The language package Unicode UTF-8 is required.	
<b>Virtualization</b>	
x86 – VMware, Parallels, Xen, Hyper-V	